

# Canopy Hood

## Ordering Information

- When ordering, specify material, gauge (if non-standard) and opening size. 18" square, 24" square, 36" square, or 48" square. Other sizes available upon request. Maximum size 72"x48".
- Hemmed end standard.
- If flange needed, please see Transitions.

Ø in.	H in.	W in.	X in.	Y in.	L in.	Std Weight Lbs
16	18	18	4	2	15.5	9.00
16	24	24			20	16.00
18	36	36			29	36.00
18	48	48			38	64.00

**Construction:**

**Seam:** lapped, spot welded, and caulked.

**Collars:** located on the exterior side of each port and considered as air flow non-directional. Collars have a laser welded longitudinal seam. If air flow directional product is required, it must be stated on the PO and additional cost may be incurred. A raised lap seam and spot weld are used for attaching the collar to the body and no caulking is used. If caulking is required, additional cost may be incurred.

**Optional End Styles (Round End)**

Standard QF end can be changed to Raw ID (RI), Raw OD (RO), No Fitting (NF), Flat Flange (FFL), Angle Flange (AFL), or Van Stone (VS).

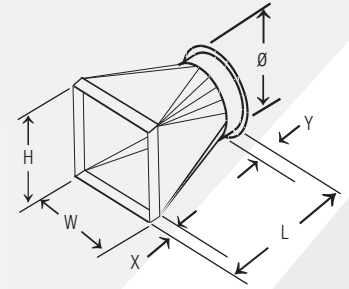
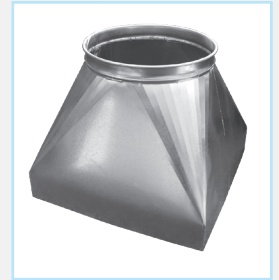
**Square End:** Hemmed edge.

## QF Material Options

Galv			SS		
Gauges	Size (in)		Gauges	Size (in)	
	Min. Ø	Max. Ø		Min. Ø	Max. Ø
Std	20	16 (18" H & W)	Std	20	16 (18" H & W)
	18	16 (24" H & W)		18	16 (24" H & W)
	16	18 (36" H & W)		16	18 (36" H & W)
	14	18 (48" H & W)		14	18* (48" H & W)
Optional	18	16   18	Optional	18	16   18
	16	16   18		16	16   18
	14	16   18			

\* 16ga collar

\*NOTE: Minimum L = .75 (W). If less, square to square transition will be provided. 7" minimum L allowable for Sq to Rd and 4" L minimum allowable for Sq to Sq.



**Hood Design Basis:**  
150 fpm capture velocity  
2 ft. distance from source